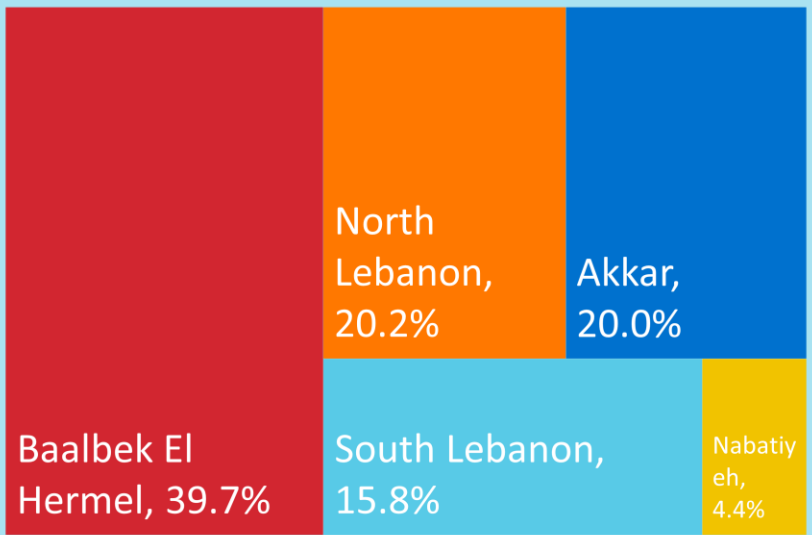


COVID-19 NEEDS ASSESSMENT

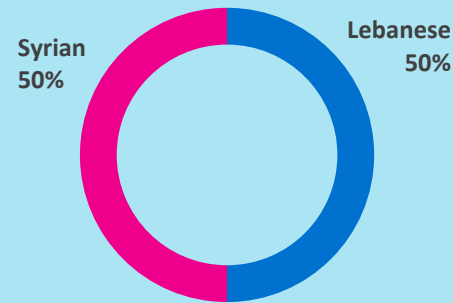
CAREGIVERS/PARENTS (1/2)

620 CAREGIVERS

GOVERNORATE



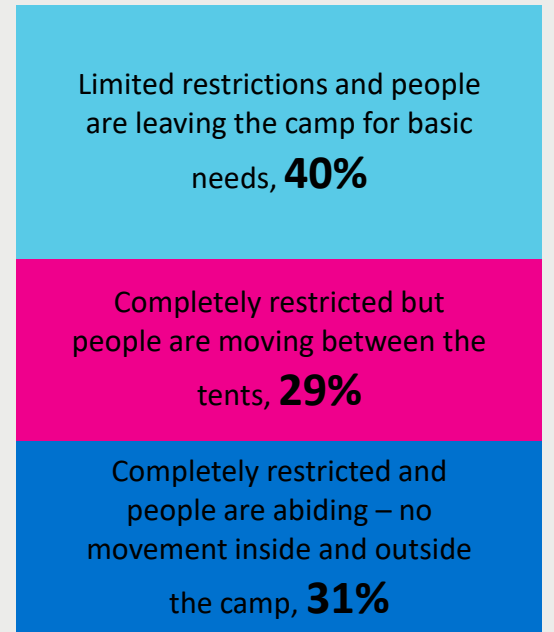
NATIONALITY



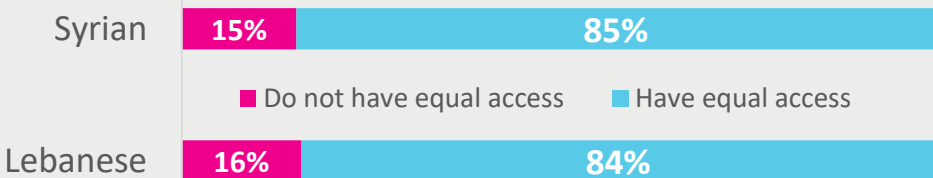
50% MALE

50% FEMALE

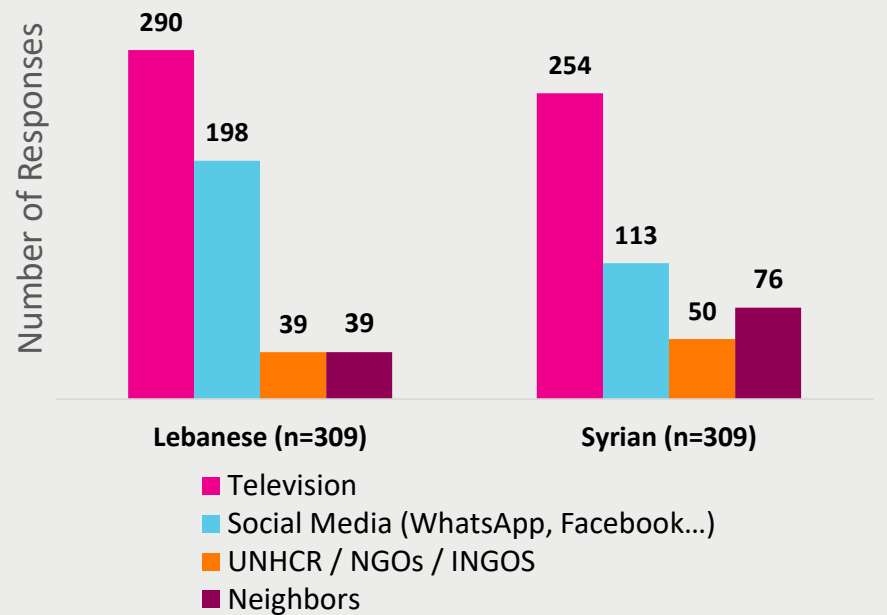
MOVEMENT RESTRICTION IN CAMPS



PERCEPTION OF CAREGIVERS ON EQUAL ACCESS TO MOBILE PHONES AND INTERNET BETWEEN BOYS AND GIRLS



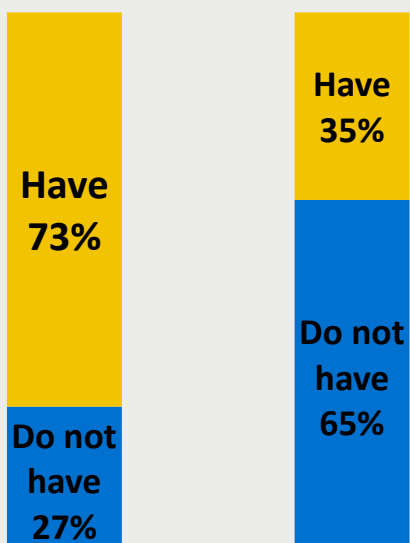
SOURCE OF INFORMATION ON COVID-19



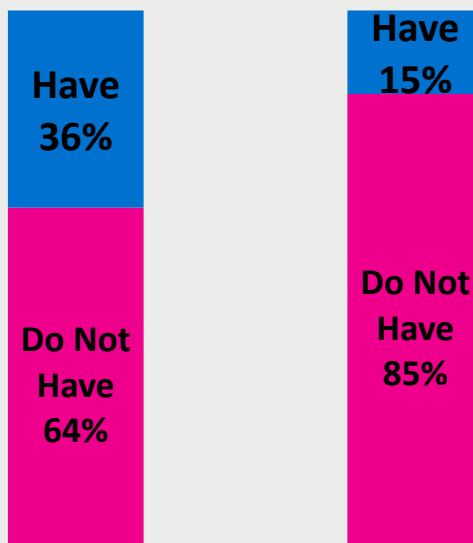
83% FEMALE RESPONDENTS* ARE NOT ACCESSING SRH SERVICES DUE TO FEARS OF CORONAVIRUS TRANSMISSION

*That usually have access to SRH facilities

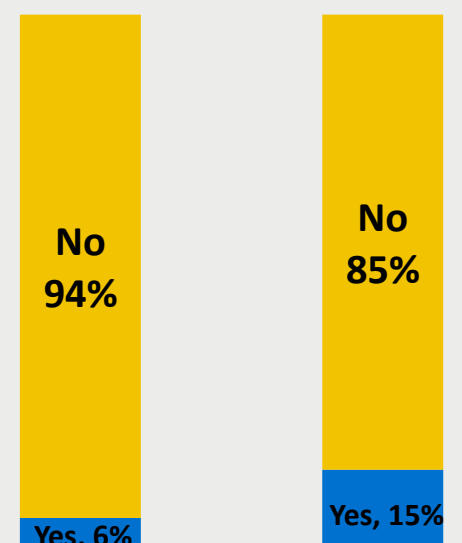
POSSESSION OF HYGIENE AND DISINFECTION SUPPLIES AT HOME



POSSESSION OF FACIAL MASKS AT HOME



RECEIVED WASH/HYGIENE AID IN THE LAST MONTH

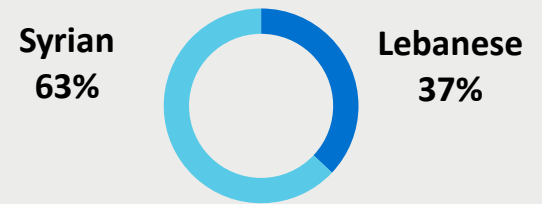


CAREGIVERS/PARENTS (2/2)

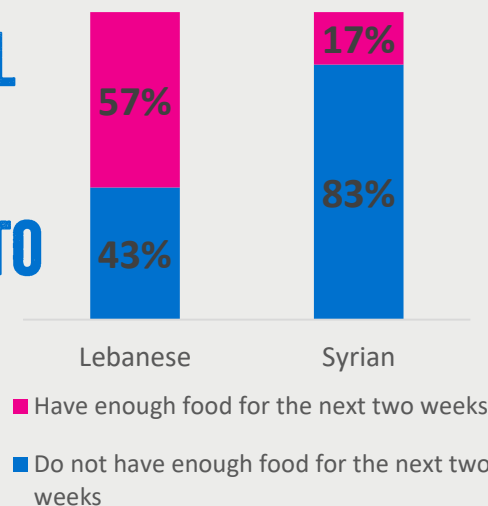
PROTECTION RISKS FACED BY WOMEN AND GIRLS, OUT OF 309 FEMALE CAREGIVERS,

- 37% REPORTED DOMESTIC VIOLENCE
- 34% REPORTED THAT THEY DO NOT KNOW
- 20% REPORTED HARASSMENT OR DISCRIMINATION
- 11% REPORTED SEXUAL EXPLOITATION AND ABUSE

53% OF FEMALE CAREGIVERS DO NOT HAVE THE FINANCIAL MEANS TO BUY MENSTRUAL PADS ON A MONTHLY BASIS, OUT OF WHICH:

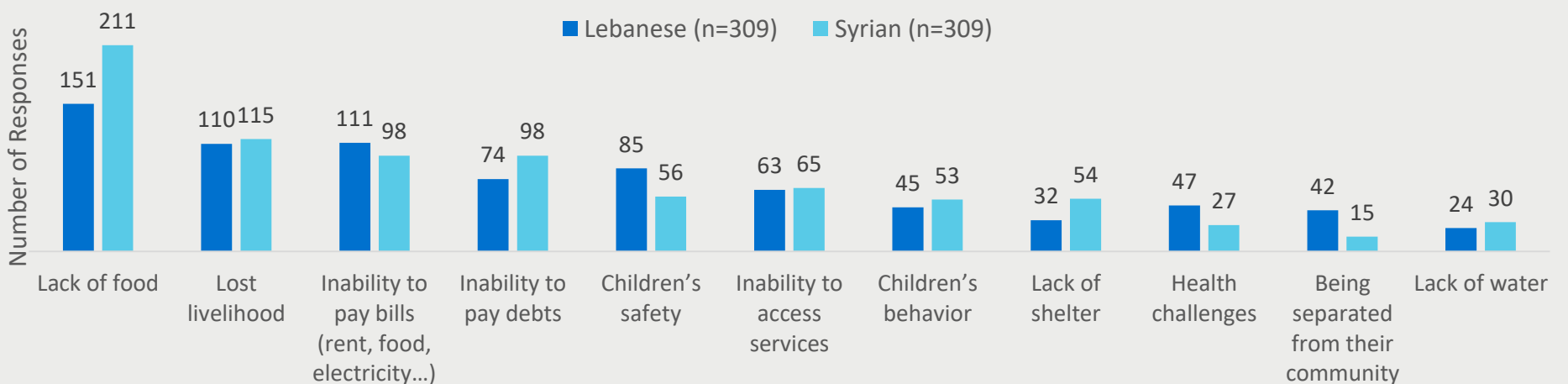


63% OF THE TOTAL CAREGIVERS DO NOT HAVE ENOUGH FOOD TO LAST THE NEXT TWO WEEKS

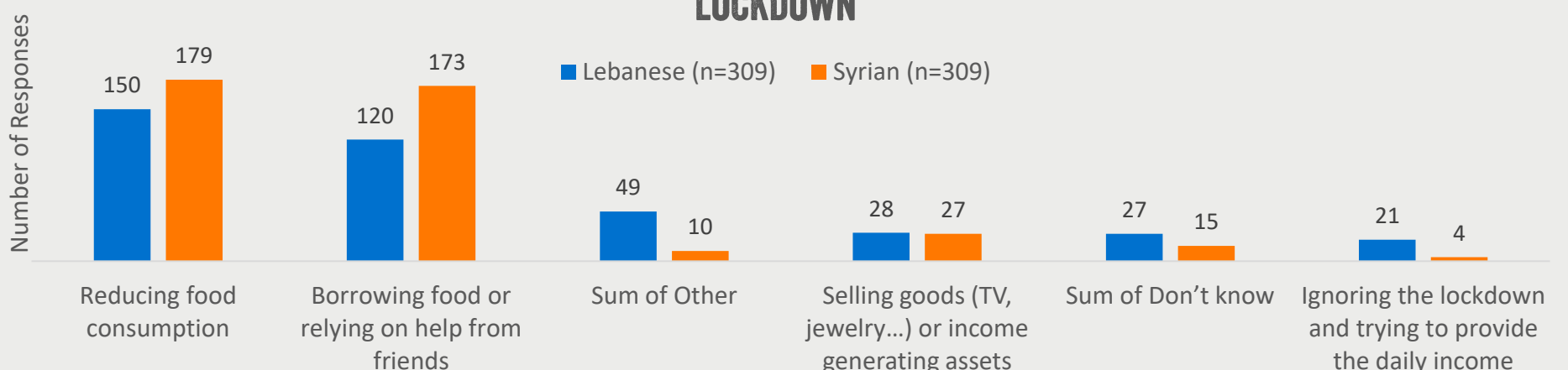


36% OF SYRIAN CAREGIVERS ARE ON HOUSING DEBT, AND 25% ARE AT RISK OF EVICTION IF THE SITUATION CONTINUES.

MAIN SOURCES OF STRESS FOR CAREGIVERS SINCE THE LOCKDOWN



MAIN STRATEGIES FOR COPING WITH THE ECONOMIC DIFFICULTIES SINCE THE LOCKDOWN

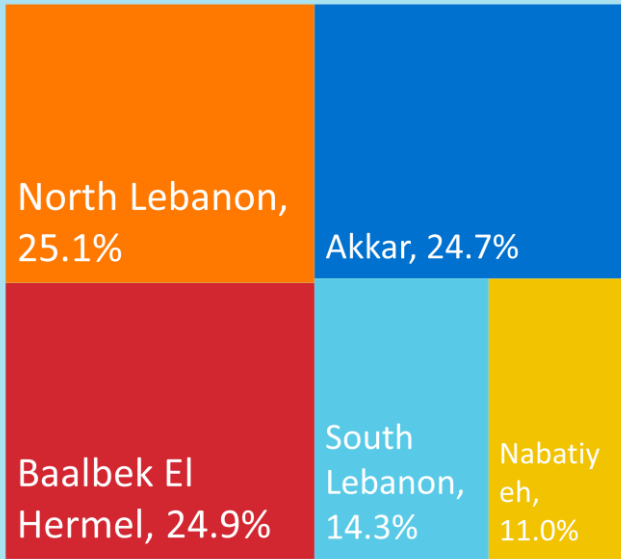


COVID-19 NEEDS ASSESSMENT

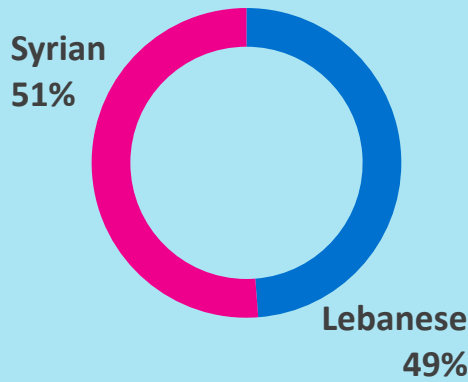
ADOLESCENTS (1/2)

498 ADOLESCENTS

GOVERNORATE



NATIONALITY



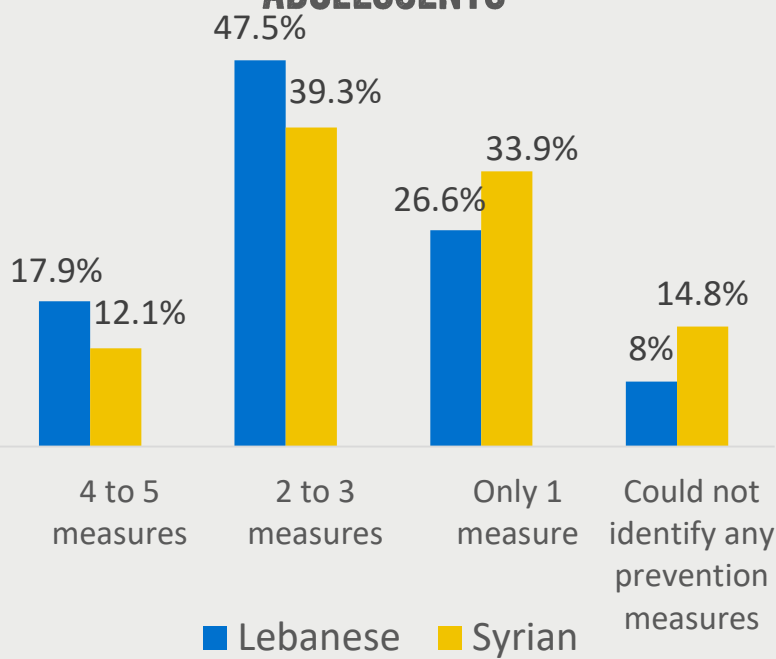
10% OF THE TOTAL ADOLESCENTS INTERVIEWED HAVE A DISABILITY OUT OF WHICH



50% MALE

50% FEMALE

NUMBER OF PREVENTION MEASURES AGAINST COVID-19 IDENTIFIED BY ADOLESCENTS

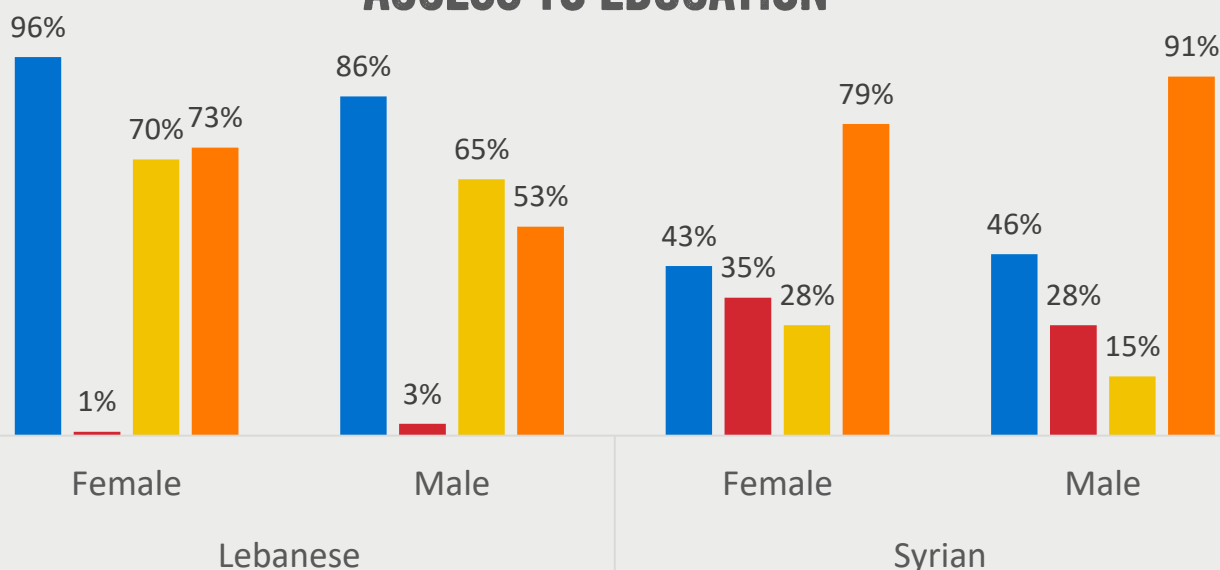


PROTECTION RISKS FACED BY WOMEN AND GIRLS

OUT OF 249 FEMALE ADOLESCENTS,

- 57% REPORTED THAT THEY DO NOT KNOW
- 32% REPORTED HARASSMENT OR DISCRIMINATION
- 13% REPORTED DOMESTIC VIOLENCE
- 6% REPORTED SEXUAL EXPLOITATION AND ABUSE
- 9% REPORTED KIDNAPPING
- 10% REPORTED PHYSICAL ABUSE

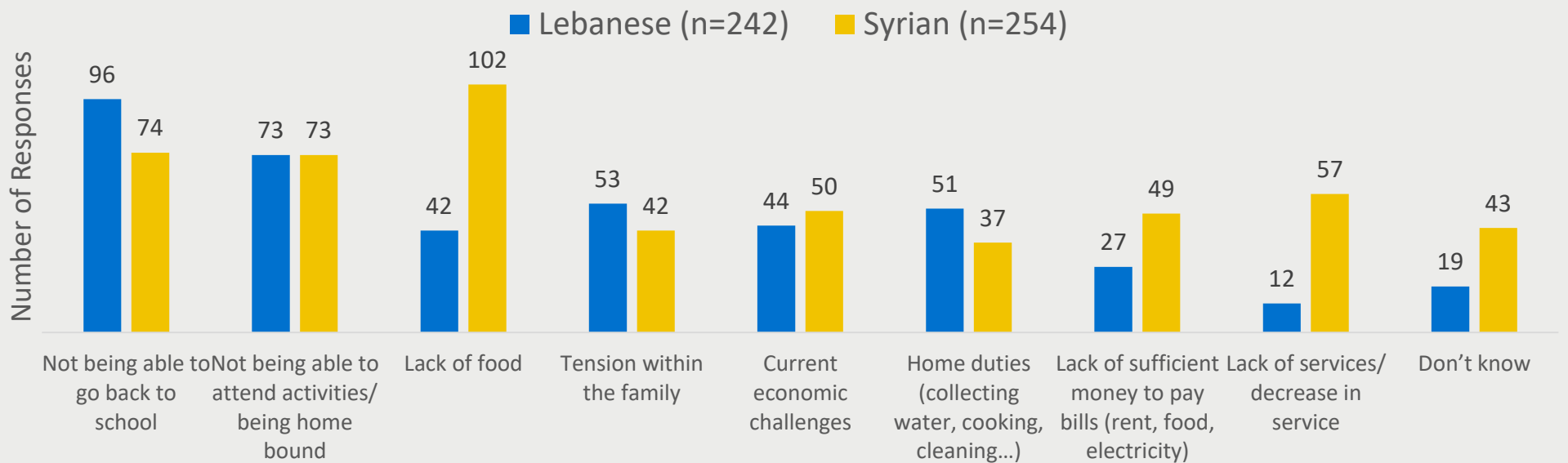
ACCESS TO EDUCATION



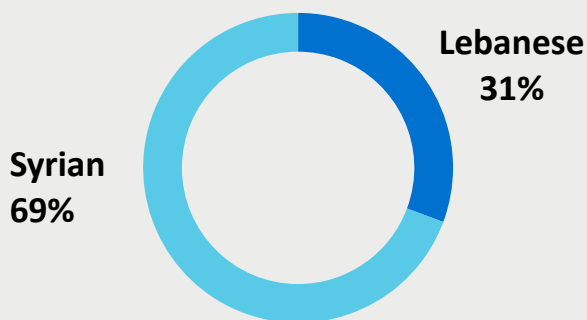
- Was attending formal education before lockdown
- Was attending Non-formal education before lockdown
- Is Attending distant learning classes since the beginning of Covid-19
- Is interested to attend distant vocational trainings (14-17 year old respondents)

ADOLESCENTS (2/2)

MAIN STRESS FACTORS DURING LOCKDOWN MENTIONED BY ADOLESCENTS

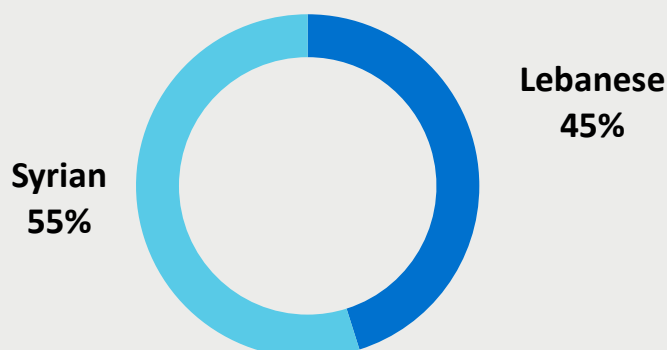


35% OF ADOLESCENT GIRLS DO NOT HAVE PHYSICAL ACCESS TO GET MENSTRUAL PADS, OUT OF WHICH:

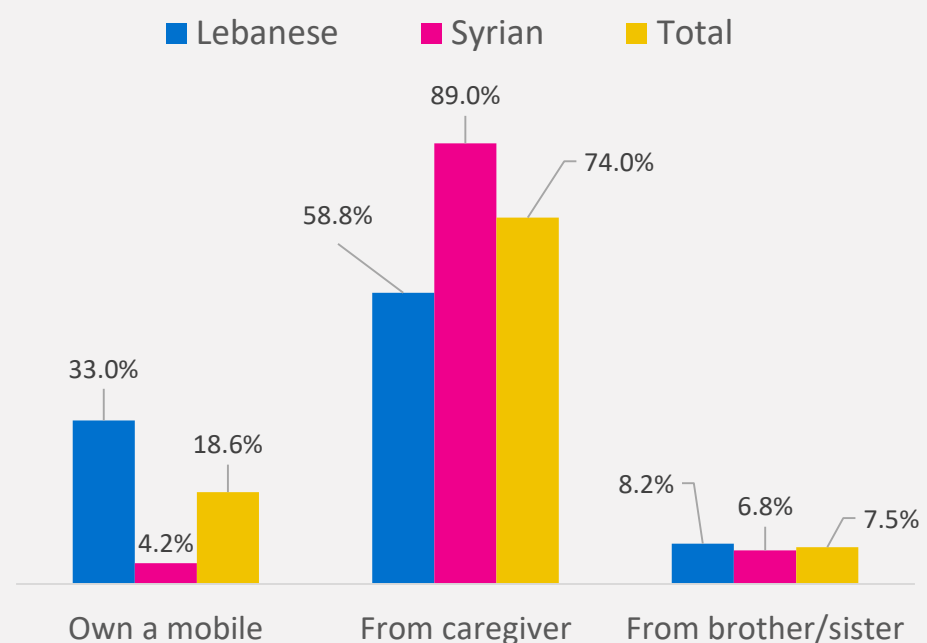


51% OF ADOLESCENT GIRLS HAVE REPORTED AN INCREASE IN TIME SPENT DOING HOUSEHOLD CHORES WHILE 20% OF ADOLESCENT BOYS HAVE REPORTED AN INCREASE IN TIME SPENT DOING HOUSEHOLD CHORES

66% OF ADOLESCENT GIRLS DO NOT HAVE THE FINANCIAL MEANS TO BUY MENSTRUAL PADS ON A MONTHLY BASIS OUT OF WHICH:



ADOLESCENTS ACCESS TO MOBILE PHONES (FOR REMOTE PROGRAMMING)



Findings in this document are based on the analysis of data as of April 27th 2020.

Data collection was conducted between April 13th and 17th 2020 by Plan staff and partners including Akkar Network for Development, Amel Association, Himaya, Lebanese Organization for Studies and Training, and Rene Moawad Foundation.